

## 6 Recirculating unit

### 6.3 Type SR



The recirculating unit type SR has rollers arranged crosswise and is suitable for medium to high loads.

This recirculating unit is used combined with SCHNEEBERGER linear guideways of type R and/or RD. In this way space-saving designs can be created that can be equally loaded in all directions.

#### Benchmark data

Supporting structure

- Hardened and ground with high precision

Materials

- Supporting structure made of through hardened tool steel, hardness 58 - 62 HRC
- Rolling element made of through hardened roller bearing steel, hardness 58 - 64 HRC
- Transmission part depending on the length made of plastic or anodized aluminium
- Stainless steel on request
- From size 3 the rollers are laid in plastic shoes

Speed

- 2 m/s

Acceleration

- 50 m/s<sup>2</sup>

Operating temperatures

- -40° C to +80° C

Same installation with the following recirculating units

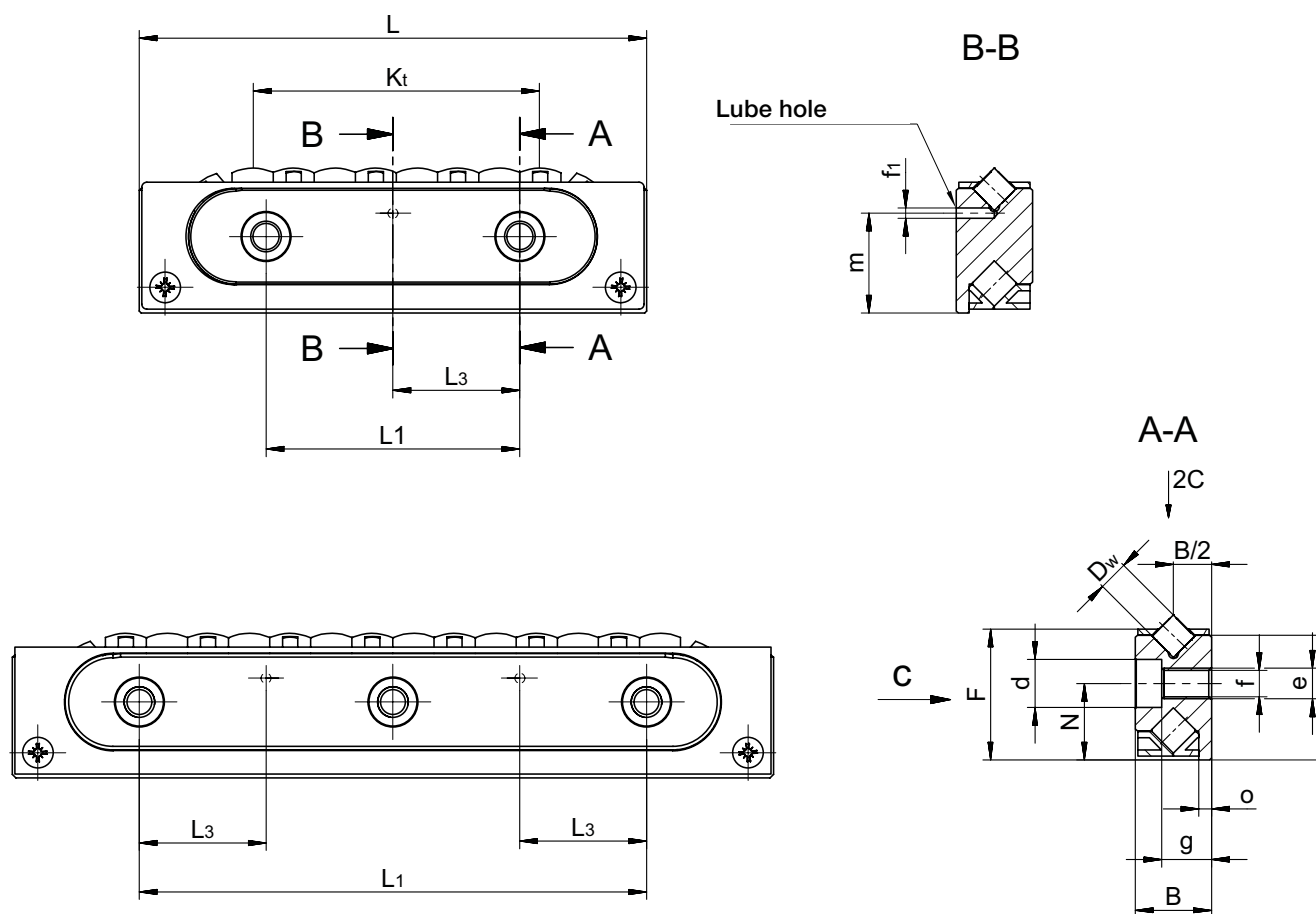
- SK, SKD and SKC

Can be combined with the following products

- Linear guideway type R and RD

## 6 Recirculating unit

### Dimensions and load capacities of type SR

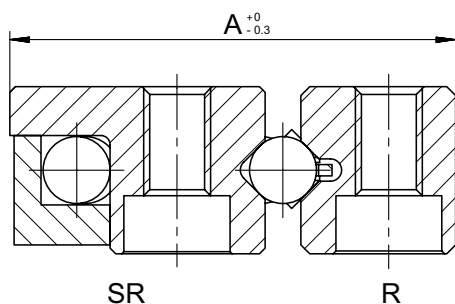


Type and size	Weight in g	B	D <sub>w</sub>	F	J	K <sub>t</sub>	L	L <sub>1</sub>	L <sub>3</sub>	N	d	e	f	f <sub>1</sub>	g	m	o	C in N	Options (see chapter 8)
<b>SR 2-032</b>	10	6	2	9.8	9.5	16	32	15	-	6	4.4	M3	2.55	-	4	-	1	380	GP
<b>SR 3-075</b>	50	8	3	15	14.5	46	75	25	12.5	9	6	M4	3.3	1.5	4.9	11.8	1.3	850	GP
<b>SR 6-100</b>	210	15	6	25.7	24.5	56	100	50	25	15	9.5	M6	5.2	2	9.8	19.7	2.5	2'150	GP
<b>SR 6-150</b>	310					105	150	28.9										3'750	
<b>SR 9-150</b>	750	22	9	40.5	39	92	150	100	50	26	10.5	M8	6.8	3	15.8	32.4	3.5	5'850	GP
<b>SR 12-200</b>	1'580	28	12	51.5	49	112	200	100	50	32	13.5	M10	8.5	3	19.8	40.2	4	10'000	GP

The types in bold are standard. Type SR 12 is available on request

# 6 Recirculating unit

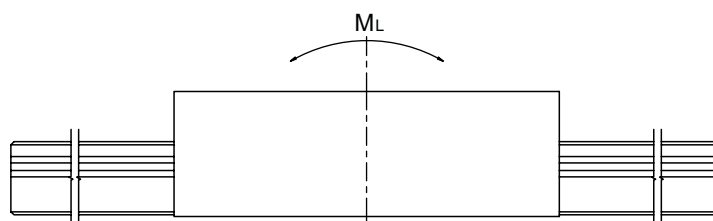
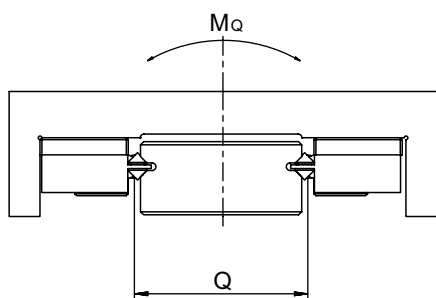
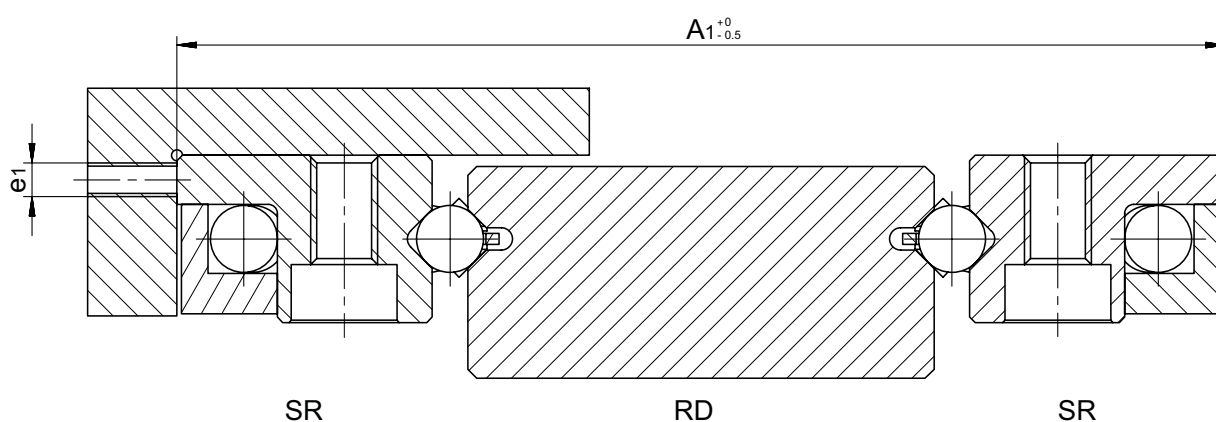
## Installed dimensions and permissible torques for type SR



Installed dimensions for type SR

Type and size	A	A <sub>1</sub>	e <sub>1</sub>
<b>SR 2-032</b>	15.5	37	M2.5
<b>SR 3-075</b>	23.5	57	M3
<b>SR 6-100</b>	40	94	M5
<b>SR 6-150</b>	40	94	M5
<b>SR 9-150</b>	61	150	M6
<b>SR 12-200</b>	78	175	M8

The types in bold are standard. Type SR 12 is available on request



Torques for type SR

Type and size	Q	M <sub>L</sub> in Nm	M <sub>Q</sub> in Nm
<b>SR 2-032</b>	18.0	3.0	7.0
<b>SR 3-075</b>	28.0	12.0	24.0
<b>SR 6-100</b>	45.0	60.0	97.0
<b>SR 6-150</b>		112.0	169.0
<b>SR 9-150</b>	72.0	241.0	421.0
<b>SR 12-200</b>	77.0	553.0	770.0

The types in bold are standard. Type SR 12 is available on request

